

Our Lady of Mt Carmel Parish

Sunbury

Parish Organisation



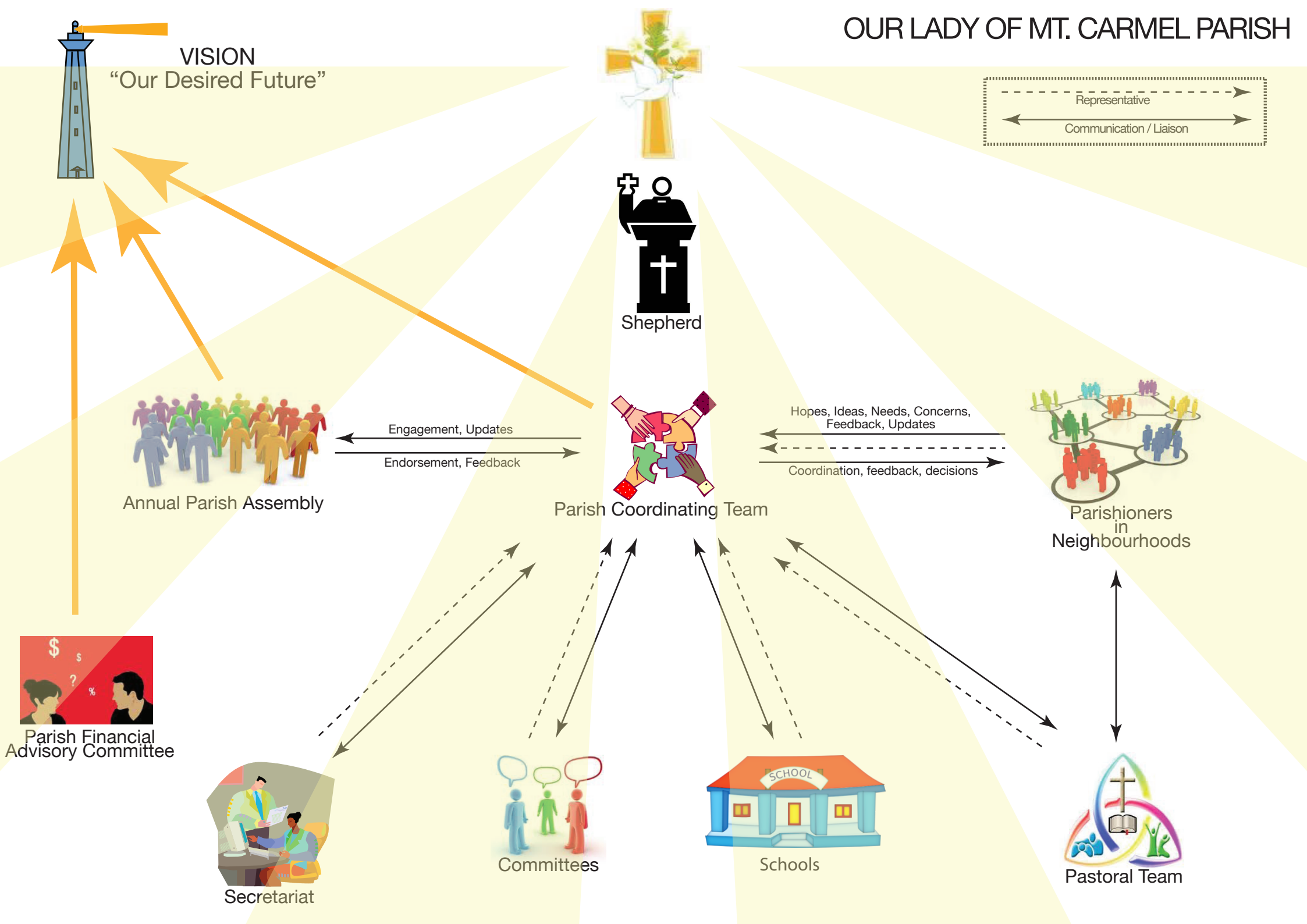
VISION
"Our Desired Future"



OUR LADY OF MT. CARMEL PARISH

By the end of 2013, through building relationships of friendship and faith,
as the people of Our Lady of Mt. Carmel Parish we have become a Christian Community
in which we value one another and use our gifts for the good of all.

OUR LADY OF MT. CARMEL PARISH



OUR LADY OF MT CARMEL PARISH

Parishioners:

- The heart and soul of the parish

Neighbourhoods:

- The Geographic organisation of parishioners
- Provide local fellowship, support and identity
- Led by a couple of local leaders
- They provide to the PCT:
 - Proposals on projects (local and parish)
 - Updates on activities
 - Feedback
 - Inputs on hopes, ideas, needs, concerns of Parishioners

Pastoral Coordination Team: Representatives of:

- Neighbourhoods – local communities
- Schools
- Pastoral Team including Parish Priest /s
- They:
 - Develop, Implement, improve parish initiatives
 - Make decisions
 - Assist coordinate activities across the Parish

Parish Assembly – Annual

- Open invite to all members of the Parish from neighbourhoods, parish groups (Legion of Mary, Mothers Groups, Older people, Jill Gibbs Neighbourhood Garden), Parish Priest, Parish Pastoral Team, Schools, Parish Committees, Parish Finance Advisory Committee
- It is essentially consultative:
 - Receives updates on groups, neighbourhoods, committees from across the parish
 - Provides feedback on issues and activities, endorsements on plans and projects.

Parish Pastoral Team

- Parish Priest/s, Pastoral Associates
- Pastoral Coordinator
- It:
 - Ministers to the Pastoral needs of the Parish and its parishioners

Parish Committee's

- Assist, coordinate, work in specialist areas across the Parish
 - Liturgy
 - Religious Education
 - Rite of Christian Initiation of Adults
 - Social Justice Group
 - Planned Giving Committee
 - Boards of Education
 - Ecumenical Committee
 - Parish Centre Committee
 - Network of Parish Posties

Parish Secretariat

- Assist the Parish Priest and Parishioners with the business of running and administering the Parish.
- Day to day management of Parish finances

Parish Finance Advisory Committee

- A separate body to the Parish Pastoral Council (not a sub committee of it and does not report to it).
- Assists the Parish priest in his task of administering the Parish finances, maintaining the parish properties, planning for future capital works and raising the necessary funds.
- Not directly involved in the day to day management of Parish finances.